

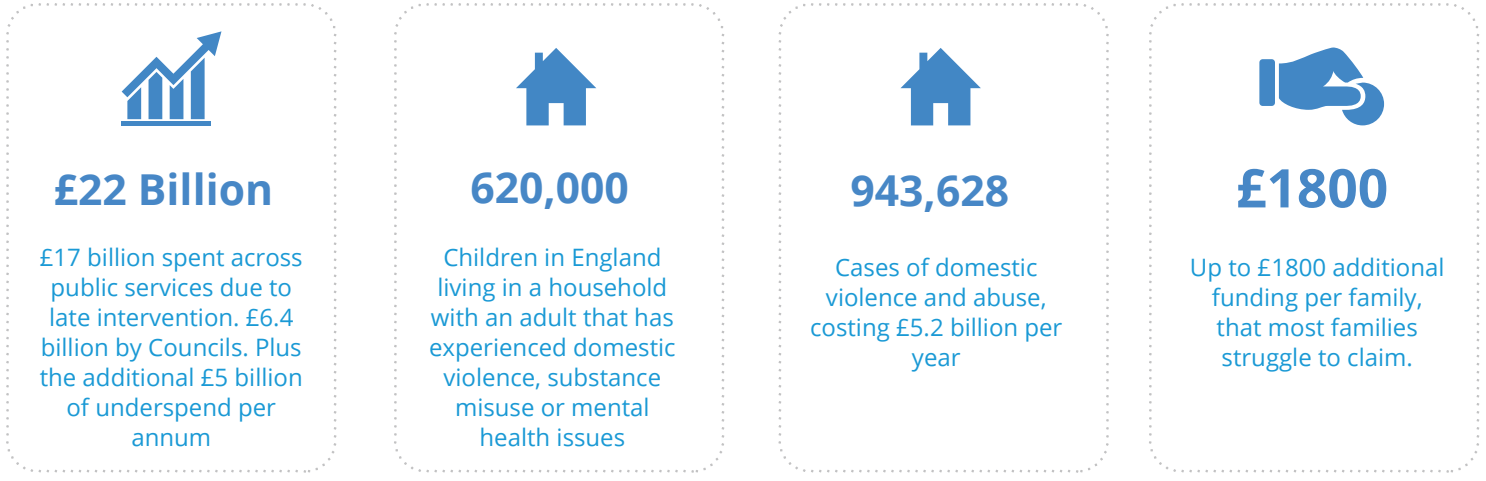


# Why data matters in Supporting Families

With a growing population, it's vital for Local Authorities to utilise data to its full potential, ensuring vulnerable families and children are protected.

**Supporting Families is building the resilience of vulnerable families, driving system change, and providing the right support at the right time.**

## The scale of the Supporting Families challenge



## Identifying those in need of support

In the re-development from **Troubled Families** to **Supporting Families**, the criteria for eligibility has changed, making finding those in need trickier than before. The **Outcomes Framework have expanded from 6 to 10** this is to ensure a broad framework for supporting vulnerable people.



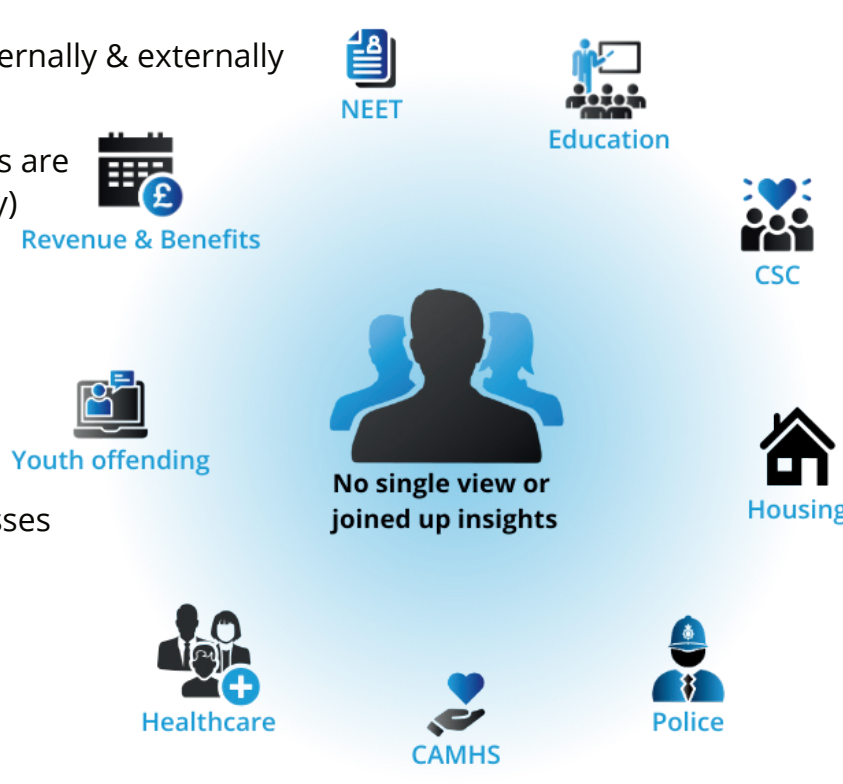
The burden of proof has also been expanded from 2 to 3 of the criteria now being met.

Up to £1,800 available for each family that an authority identify.

Data on people is now needing to be pulled from **social care, education, police, housing, and health**, and potentially wider. The capability to automatically produce a single view of a child/young person, household and family is critical in order to view them as a whole.

## Why this is a challenge for Local Authorities

- Disconnected systems and datasets internally & externally
- No ID's across records datasets, records are inconsistent (e.g. Tom, Thomas, Tommy)
- Data Governance
- Information sharing constrained
- Lots of manual data & reporting processes
- Confidence using data
- Cloud readiness



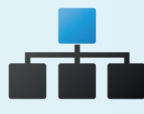
## How can Data & Insights help deliver Supporting Families

Councils require an end-to-end solution that can combine multiple sources, for identifying and reporting those in need of support powered by a Single View of the Citizen and Family.



### Identification

Bringing together data from a variety of sources on to a single platform.



### On-time intervention

Timely identification of families that meet the criteria and are eligible for funding.



### Move towards prevention

Use data to identify the patterns and trends, to proactively prevent issues.

A complete and accurate single view of a child, household and family has the potential to **revolutionise** how Supporting Families is delivered and services collaborate across the full breadth of the council's operations.

Get started with a Supporting Families Data Platform. **Get in touch today to find out more.**

[Supporting Families Data Platform](#)