



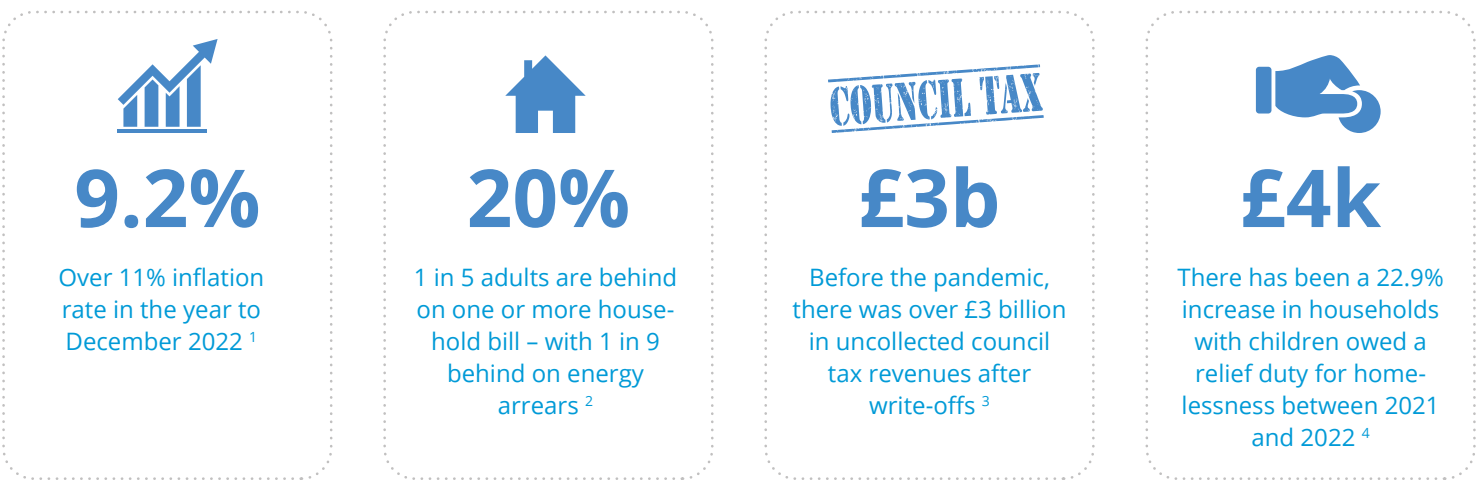
Combatting the Cost of Living with a Single View of Citizen Debt and Hardship



With the cost of living crisis and political uncertainty we're all currently living through, it's more important than ever for Local Authorities to utilise data to its full potential to prevent arrears across your authority.

Siloed datasets and inconsistent data across sources creates a manual and time-consuming reporting process, which has a ripple effect on the Authority and wider community. Councils lose out on revenue and cannot easily identify vulnerable people in order to offer them support, which is particularly pertinent given the cost of living crisis currently impacting the UK.

The UK's rising debt - in numbers



Reshaping data insights to work for you



Only 0.5% of accessible data is ever analysed or used. Imagine what your council could achieve if you were able to focus your resources on analysing your consolidated data.



Seeing records of a single person's debt over multiple systems would allow your council to see changes as they occur, as well as identifying those who need support and those wilfully avoiding payments.



This hub of trusted data can then be used to **forecast trends and predict** when citizens may fall into hardship – due to the cost of living crisis or other reasons - in order to develop preventative strategies and early intervention methods.

A citizen can have debt in multiple systems, with dissimilar data that makes identifying them difficult, such as different emails or names. Our Single View of Citizen Debt can merge this data so you can view it as a complete dashboard.



Johnathan James Smith



Consolidate data from multiple systems into one single view, one dashboard, one collaborative case management app'

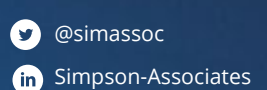
Get started on your journey to improved citizen debt insights with our Citizens Insight Accelerator. **Get in touch today to find out more.**

Citizens Insight Accelerator



Simpson Associates Information Services Limited
Suite 3B, 20 George Hudson Street, York, YO1 6WR

T: +44 (0) 1904 234 510
E: info@simpson-associates.co.uk
W: www.simpson-associates.co.uk



Sources 1. Statistics Archive - The Money Charity 2. Impossible choices Cost of Living briefing Money Advice Trust 3. MoHCLG 4. Statutory homelessness in England: 2021-22 infographic (publishing.service.gov.uk)